



ATU-620

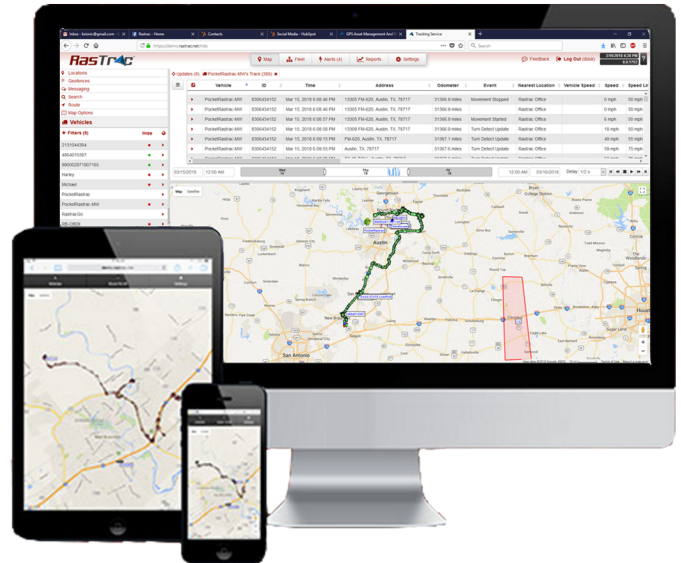
The ATU-620 is a AA battery operated asset tracking product designed for reliable, multi-year deployments. The ATU-620 is an ideal solution for managing assets that will be deployed for long periods without maintenance needs. Superior internal antennas for both cellular and GPS eliminate the need for wired antennas and make the ATU-620 mountable virtually anywhere for easy, inexpensive installations.

Key Features

- GSM/GPRS or HSPA configurations
- 6 months battery life at 1 message per day (3 AA batteries)
- 1 year battery life at 1 message per day (6 AA batteries)
- IP66 Rugged, water and dust resistant enclosure
- Superior internal antennas for both cellular and GPS eliminate the need for wired antennas
- Mountable virtually anywhere for easy, inexpensive installations
- Built-in motion sensor
- Built-in 3-axis accelerometer for motion sense, tilt, and impact sensing
- Over-the-air update capability for configuration and firmware
- Ultra low power sleep mode
- Voltage monitoring and low battery notification
- 2,000 buffered messages
- 10 built-in geofences

Specifications

Dimensions	2.9 x 4.9 x 1.4" (74 x 124 x 36mm)
Weight	11 oz (325g)
SIM Access	Internal
Cellular and GPS Antenna	Internal
Temperature	-30° to +75° C
Humidity	95% R.H. @ 50° C non-condensing



www.rastrac.com

sales@rastrac.com

(877) 680-1188