



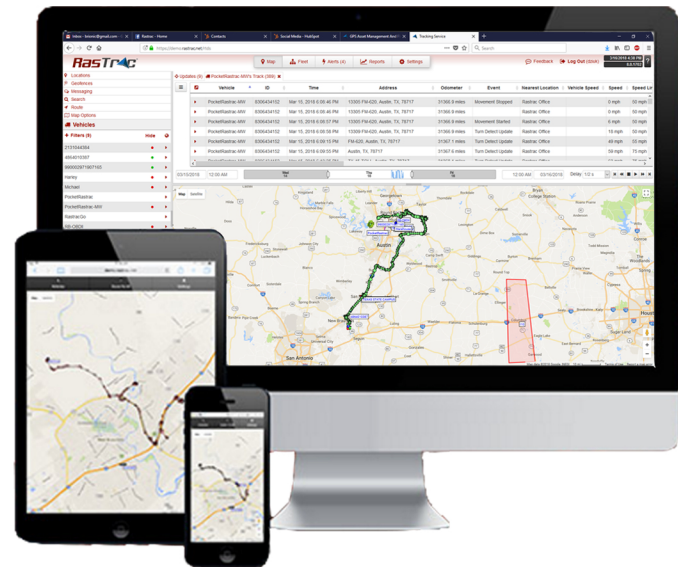
GL300VC

The water-resistant GL300VC is a powerful GPS locator designed for lone-worker, vehicle, pet, and asset tracking applications. The thumb-sized button makes this device ideal for applications requiring rapid notification of emergency or regular setting of geofences based on current location. It's built-in 3-axis accelerometer allows for motion-detection alerts and monitoring.

Key Features

- Water resistant
- Dual band CDMA 1xRTT frequencies 800/1900 MHz
- Internal CDMA/GPS antennas
- Thumb-sized button allowing easy emergency alerts or instant geofence settings
- Internal 3-axis accelerometer for power saving and motion detection
- Full power management, can be connected to external DC power or battery
- Report position and status according to preset time schedules
- Low power consumption
- Support up to 5 internal geofence regions
- Low power alarm
- Two digital inputs

Specifications	
Dimensions	78.5mm x 38.5mm x 22.5mm
Weight	67g
Temperature	20°C ~ +55°C
Digital Inputs	Two digital inputs One positive trigger for ignition detection One negative trigger input for normal use
CDMA Antenna	Internal only
Mini USB Interface	For external power and configuration
Transmit Protocol	TCP, UDP, SMS
Water Resistance	IPX5 compliant



www.rastrac.com

sales@rastrac.com

(877) 680-1188