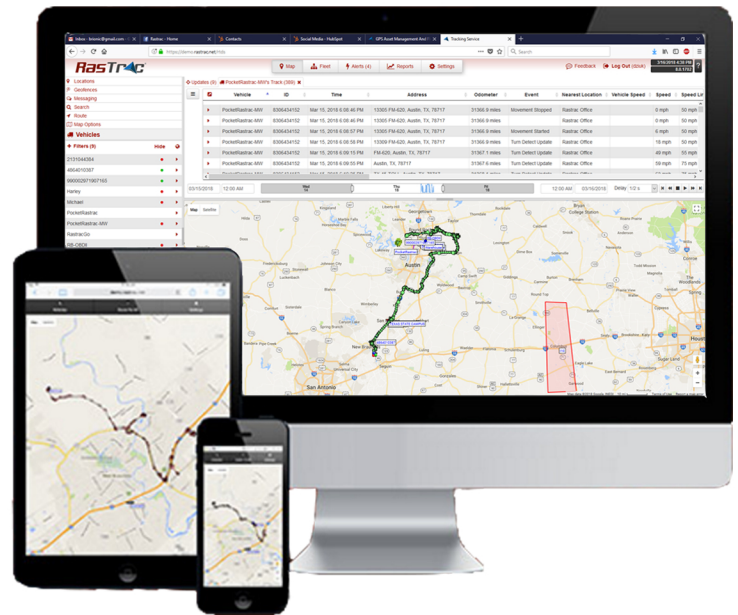


TTU-700

The TTU-700 is a battery operated non-rechargeable trailer tracking product designed for reliable, multi-year deployments. The TTU-700 is an ideal solution for managing assets that will be deployed for long periods without maintenance needs. The TTU-700 is a complete trailer and asset tracking and communications device which features a small size, superior GPS performance, and an internal 57 Ah battery.

Key Features

- GSM/GPRS or HSPA configurations
- 7 year battery life with a single message per day
- 57 Ah lithium field-replaceable battery pack
- IP67 sealed and rugged enclosure
- Built-in cellular and GPS antenna for easy installation
- Super-sensitive GPS
- Built-in 3-axis accelerometer for motion sense
- Ultra-low power sleep mode (<100µA)
- Voltage monitoring and low battery notification
- 2,000 buffered messages
- 10 built-in geofences
- PEG exception-based rules
- Automatic over-the-air configuration on power-up
- Over-the-air firmware download



Specifications	
Dimensions	2.25" x 2.25" x 10.5" (55 x 55 x 260mm)
Weight	32oz (907g)
Temperature	-30° to + 75° C
Humidity	95% R.H. @ 50° C non-condensing
SIM Access	Internal
Cellular Antenna	Internal
GPS Antenna	Internal
Mounting Options	Screw mounting bracket or magnet mount



www.rastrac.com

sales@rastrac.com

(877) 680-1188