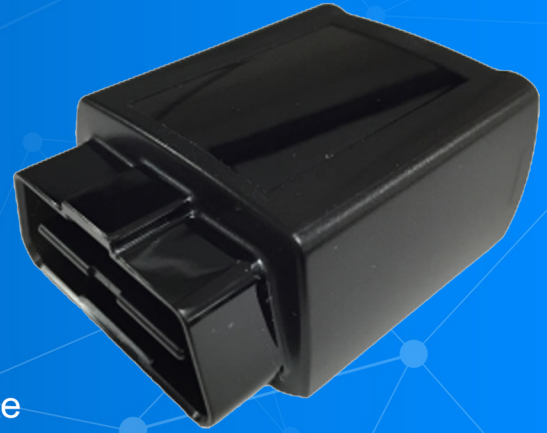


# XT-2400

The XT-2400 Series is the most versatile diagnostic & monitoring device available for communicating vital vehicle information and driver behavior. With an integrated GPS engine, accelerometer, cellular and GPS antennas, and integrated OBDII interface, this product is the ultimate solution for fleet managers in need of monitoring location, speed, and other codes available on the OBD port of vehicles.



## Key Features

- AT&T LTE Cat M1
- 4G LTE Bands 2, 4, and 12
- Integrated GPS receiver and antenna for tracking applications
- LED status indicators for GPS lock, GSM registration, and OBD II communication
- Over-the-air firmware upgrade
- Supports SMS, UDP, FTP
- 3-Axis Accelerometer and Motion Detector
- Integrated GPS receiver and antenna for tracking applications
- Supports all J1962 OBD Pins
- Audible Feedback (Buzzer)
- Optional 250 mAh backup battery

## Technical Specifications

### Mechanical

**Dimensions:** 2.4" x 1.8" x 1.1"  
**Weight:** < 2 oz.  
**Case Material:** PC

### Environmental

**Operating Temperature Range:** -20° to +70° C  
**DC Power:** 8-28V  
**Optional Internal Battery:** 250 mAh Secondary

### Physical Connection

**OBD Connector:** J1962  
**GPS Antenna:** Integrated  
**Cellular Antenna:** Integrated dual-band

### OBDII Support

- J1850 PWM
- J1850 VPW
- ISO-9141-2
- ISO-14230 KWP2000
- ISO-15765 CAN



[www.rastrac.com](http://www.rastrac.com)

[sales@rastrac.com](mailto:sales@rastrac.com)

(877) 680-1188